

Solutions

Engineering Base

ELCAD

RUPLAN

AUCOPLAN

Your Advantages:

- All the functions required for project management with ELCAD and AUCOPLAN in your EDM system
- Very simple configuration and flexible adaptation to various EDM systems
- ELCAD/AUCOPLAN starts automatically when an projects is loaded from the EDM systems
- Integration to all leading EDM systems



AUCOTEC AG
Oldenburger Allee 24 • 30659 Hanover
Telephone +49 511 6103-0 • Fax +49 511 614074
www.aucotec.com

Description:

EDM/PDM Coupling

The management of data and processes in companies is more and more taken over by engineering data management systems (EDM systems). The data and diagrams created are an essential component of the company know-how especially in electrical planning. The EDM systems ensure the access to the design data by means of a differentiated procedure for the assignment of access rights to individuals and departments. Moreover they support the structured filing of drawings according to defined criteria, thus ensuring ready availability. These systems are often also called PDM systems – here we will uniformly use the term EDM system.

The EDM interface from AUCOTEC AG provides the respective EDM system with all of the functions required for complete project management with ELCAD and AUCOPLAN.

The functional areas are divided into the sections:

- Project management
- Project editing
- Data exchange

Operating Mode of the Interface

The optional ELCAD integration component is characterized by a very simple configuration and flexible adaptation to various systems and technologies. It provides a neutral communication level that is used for transmitting requests, protocols and system messages.

In the EDM system, a special document type "ELCAD-PROJECT" is created for the ELCAD project. This document type is used to manage the ELCAD projects.

The archive formats of the individual sheets are stored in another document type "ELCAD-DOC" of the respective ELCAD project. In the EDM system, these individual sheets are automatically assigned to the ELCAD project as document structure.

Solutions

Engineering Base

ELCAD

RUPLAN

AUCOPLAN

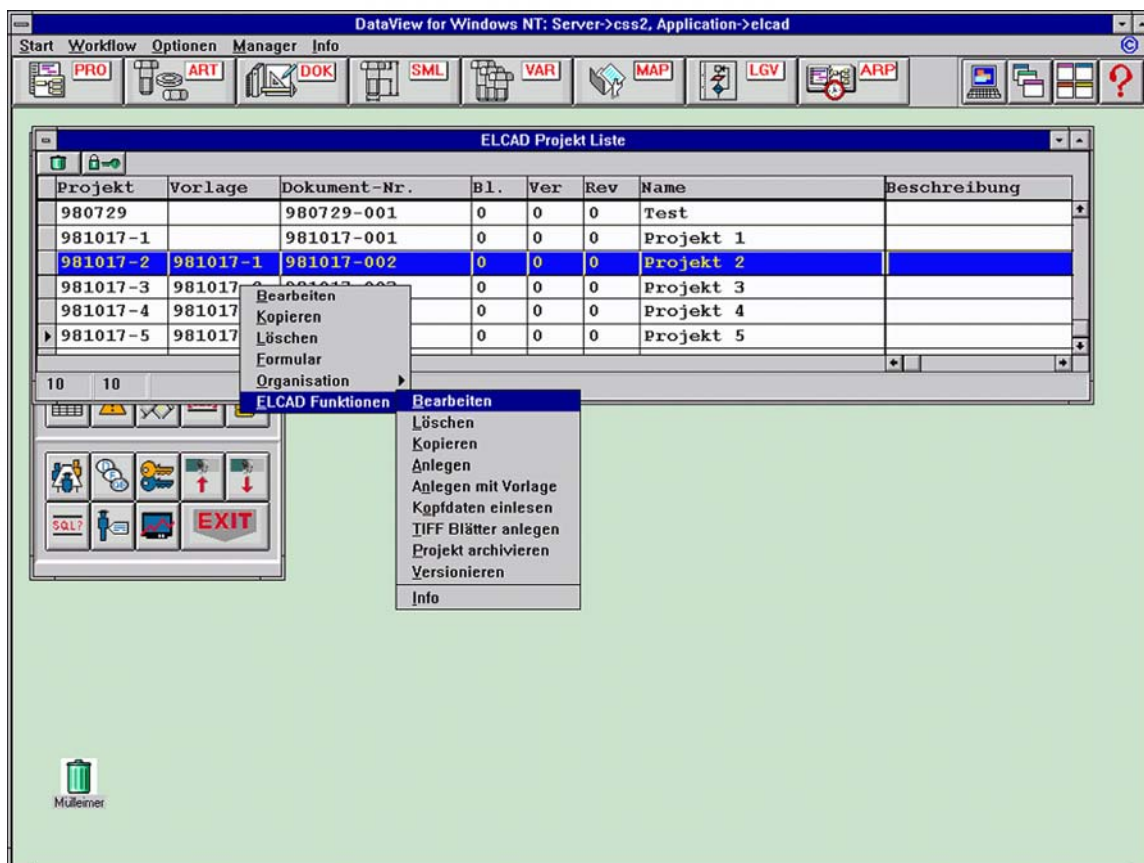
Description:

Projects can be stored in the EDM data area (e.g. "electronic safe") in their entirety.

When an ELCAD project is loaded from the EDM system, the ELCAD system is automatically started. This can also be done in a restricted manner, e.g. for viewing a project.

The following functions are supported:

Edit	Editing of an ELCAD project
Delete	Deletion of an ELCAD project
Copy	Copying of an ELCAD project
Create	Creation of a new ELCAD project
Create with template	Creation of an ELCAD project from a project template
Read header data	Read in header data (from EDM to ELCAD)
Create documents	Creation of TIFF, DXF/DWG or PDF documents and transfer to the EDM system
Archive project	Archiving of an ELCAD project and transfer to the EDM system
Check project	Executes a project check
Create table of contents	Creation of a complete contents table for all documents of a project
Integration of automation tools	By means of generating functions and command language programs, automatically running functions can be integrated
Edit drawing	Call of an individual drawing file for editing



Solutions

Engineering Base

ELCAD

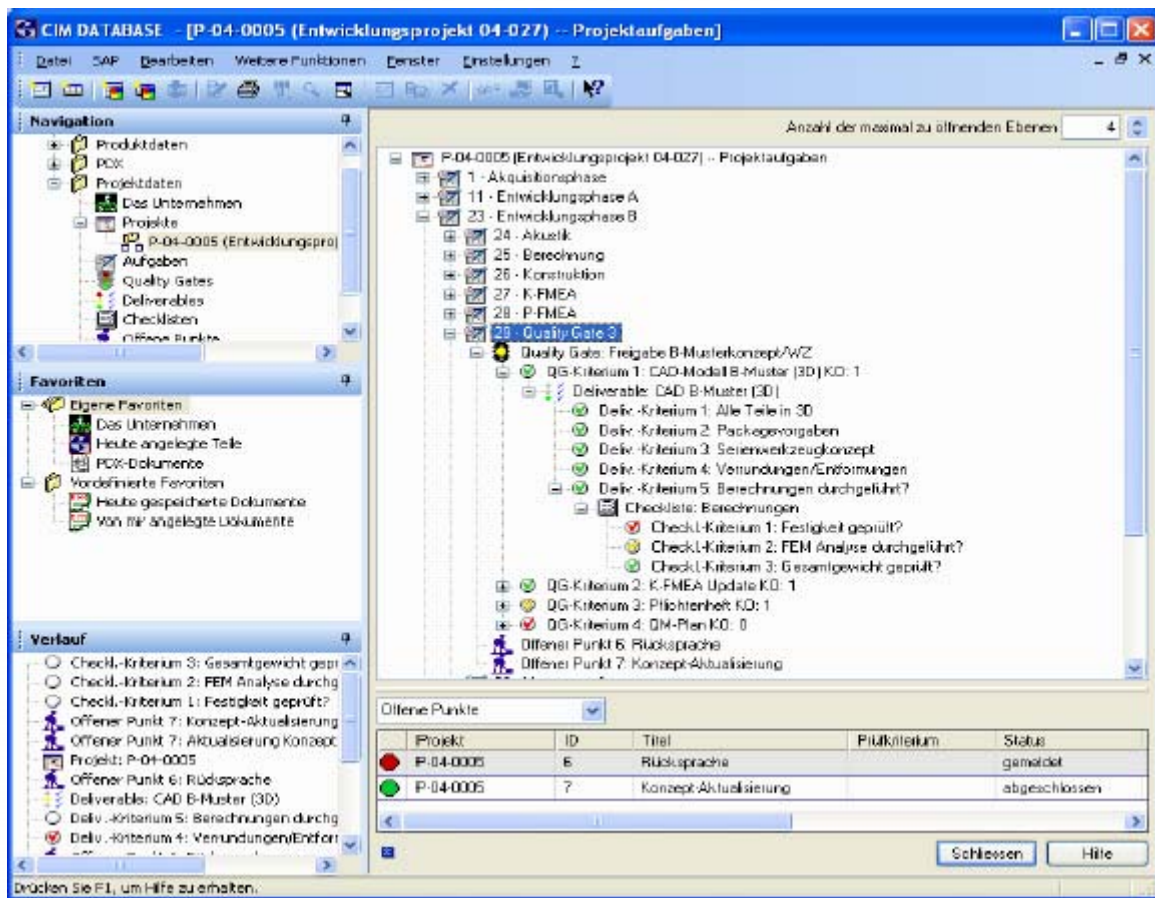
RUPLAN

AUCOPLAN

Description:

The communication between the EDM system and ELCAD is achieved on the basis of job files. A job file is created by the EDM system and transferred to ELCAD/AUCOPLAN.

Result logs created by ELCAD/AUCOPLAN record the data processed and the actions executed and can be evaluated if applicable.



Setup/Installation

The installation of the EDM integration component is effected automatically with the ELCAD/AUCOPLAN standard installation. No additional components are required. All integration options are documented in the ELCAD online help and explained on the basis of examples.

Examples of Solutions

The coupling to engineering data management systems offers a considerable rationalization potential. Our experience with the processing of the most varied integration projects is based on all leading EDM systems such as CADIM, Axalant, MatrixOne, eMatrix, ProCoS, proALPHA, CIM DATABASE, Documentum, SMARTTEAM, etc.